

STUDENT SUPPORT AND GUIDANCE CELL



SSGP nodal officers Female – Dr. Swapna C

Male- Dr. Mayeesh R

ssgc@kmctdentalcollege.org



Asha Gopalakrishnan- Counsellor

Aims and Objectives

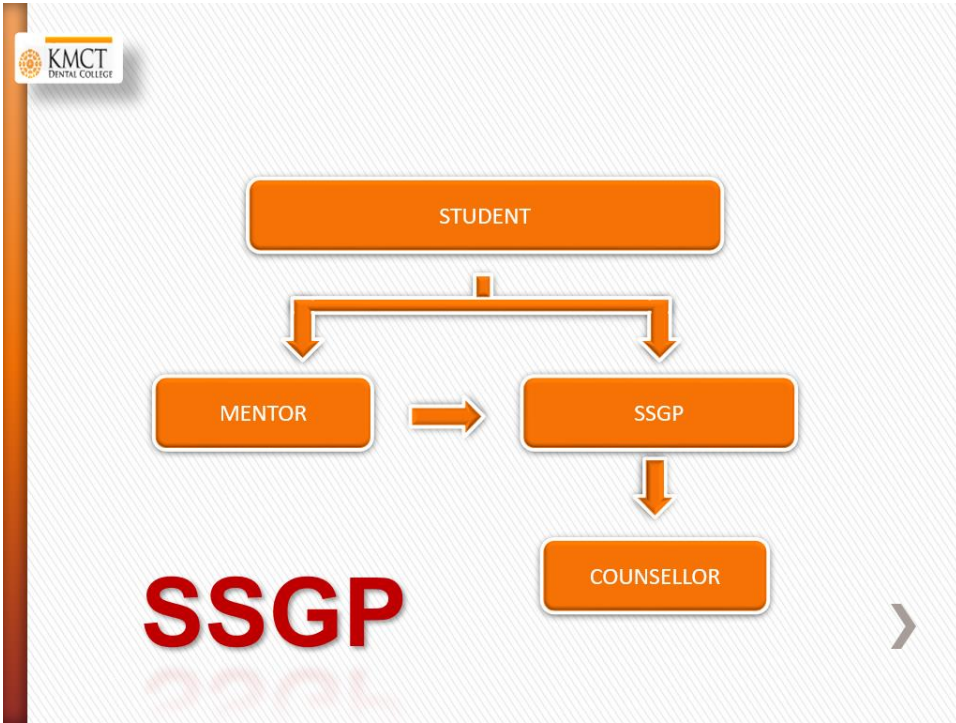
To emphasize on the holistic development of students.

- » To address the academic and scholastic issues of students.
- » To provide interventions for physical, mental and intellectual issues of students.
- » To overcome academic learning difficulties of the students.

Background

- » Flagship program by **Kerala University of Health Sciences**.
- » KMCT Dental College constituted SSGP cell from the academic year 2017-18.
- » The college is having an effective Mentor Mentee system.
- » Mentor Mentee system along with SSGP work as a unit and addresses academic issues, psycho-social issues and health issues of the students.

»




»


SSGP CONSENT FORM KMCT DENTAL COLLEGE AND KUHS

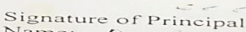
STUDENT GUIDANCE SUPPORT CELL
A Partnership project between KUHS and Affiliated Colleges
Consent Form fixing Responsibilities

	Activities	KUHS responsibility	Affiliated College responsibility	Remarks
Part-I : Academic achievement	1. Conceptualization 2. Tool Identification for screening 3. Preparation of module for intervention 4. College faculty coordinators identification 5. Coordinators training for screening & intervention 6. Student participation (computer assisted) 7. Online availability 8. College wise data analysis & reporting back 9. Consolidation of project feedback 10. Process evaluation & Documentation	Yes Yes Yes No Yes No Yes Yes Yes	No No No YES No YES No No No	Both <18 yrs & >18 yrs
Part-II Physical & Reproductive Health	1. Conceptualization 2. Tool Identification for screening 3. Preparation of module for intervention 4. College faculty coordinators identification 5. Coordinators training for screening & intervention 6. Availability of services of Gynaecologist as and when required 7. Student participation (Self screening) 8. College wise report of number referred 9. Consolidation of project feedback 10. Process evaluation & Documentation	Yes Yes Yes Yes No Yes No No Yes	No No No YES No YES YES YES No	>18 yrs only
Part-III Psycho social Health	1. Conceptualization 2. Tool Identification for screening 3. Preparation of module for intervention 4. College faculty coordinators identification 5. Coordinators training for screening & intervention 6. Availability of services of Psychiatrist as and when required 7. Student participation (Self screening) 8. College wise report of number referred 9. Consolidation of project feedback 10. Process evaluation & Documentation	Yes Yes Yes Yes No Yes No No Yes	No No No YES No YES YES YES No	>18 yrs only

We the undersigned wish to participate voluntarily in the "STUDENT GUIDANCE SUPPORT CELL- A Partnership project between KUHS and Affiliated Colleges", establishing a "student guidance support cell" in our institution and to fulfil our part of responsibility as given above, having understood our responsibility and right to modify the intervention as per the opinion of parent teacher association.

Signature of Manager: 
 Name: Dr. Anand M. S. S. S.
 Name of College: KMCT DENTAL COLLEGE



Signature of Principal: 
 Name: Dr. P. S. S. S.
 KUHS Affiliation No.:

Procedure

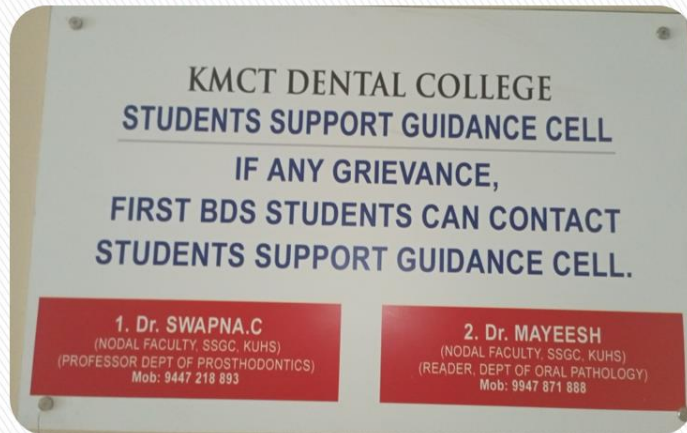
- » 2 faculty who have undergone training in KUHS are available in the campus who are appointed as Student Support and Guidance Program nodal officers.
- » The University conducts review meetings of Student Support and Guidance Program nodal officers frequently.
- » SSGP Reports are also sent to the university on a regular basis.
- » The nodal faculty members detect and intervene early and preliminary issues faced by students (mainly First year) in the college.
- » Guidance and counselling is provided by the nodal officers.
- » Students are referred to counsellor for further assistance if needed.



SSGP SENSITISATION TO PARENTS AND STUDENTS BY Dr.MAYEESH RADHAKRISHNA

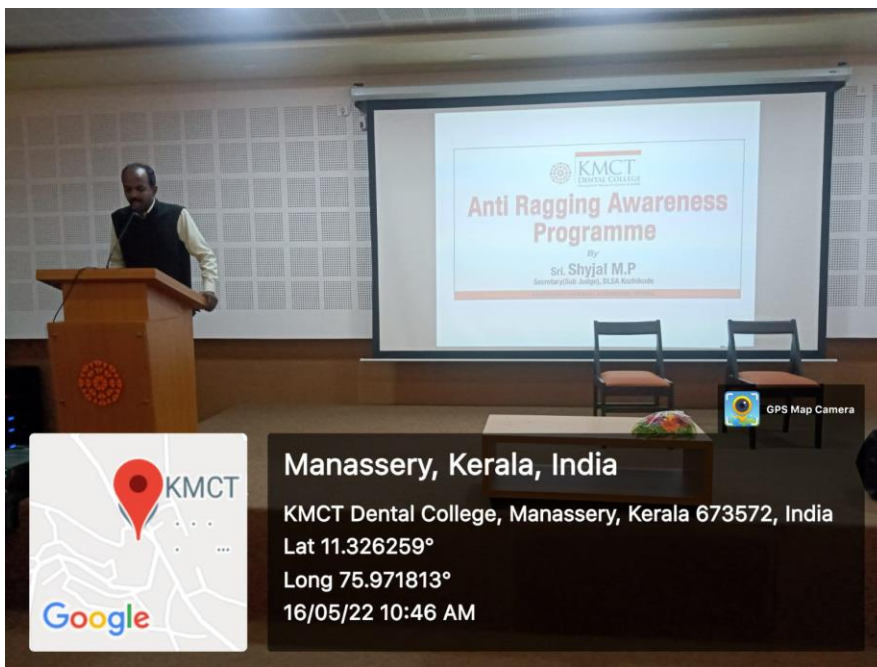


SIGN BOARDS OF SSGP IN CAMPUS



Activities initiated by Student Support Guidance Cell

- » Anti Ragging Awareness Program.
- » Communication skill development Program.
- » Lectures series on Professionalism and Time management.
- » Interpersonal relationships.
- » Interactive sessions on adolescent stress, positive living and self-esteem.



Anti Ragging Awareness Programme by Sri Shyjal M.P ,Sub Judge,Secretary DLSA (District Legal Services Authority,Kozhikode)

Counselling Sessions

KMCT
DENTAL COLLEGE

Counselling sessions

Counselling Session - I BDS Students

Topic: Handling Stress & Life in Covid Era

📅 22nd October 2021 ⌚ 2.00 PM
Venue: KMCT Medical College, Lecture Hall 1

Guest Speaker

Dr. Varsha Vidhyadharan
Assistant Professor - Dept of Psychiatry
Govt. Medical College, Kozhikode

Organized by the SSOP- KMCT Dental College

KMCT Medical College Campus, Mukkam, Kozhikode 673002
KMCT Medical College, Kozhikode, Kerala, India
Phone: 0495 2226100, 2226101, 2226102
www.kmctdentalcollege.edu.in



SSGP counselling session done by Dr.Varsha Vidyadharan,Asst Prof,Dept Of Psychiatry GMC on 22/10/21



Interactive session for First year students on Stress Management by eminent Psychologist Sisira Satheshan on 16/10/19



Mentor Training Programme
'Train the Trainers'



📅 25th August 2021 ⌚ 9 am to 10 am

Location: Lecture Hall, 7th Floor



Resource Person

Dr. Binu Purushothaman

(Professor and HoD - Dept. of Orthodontics and
Dentofacial Orthopaedics & DCI Member)

Organised By KMCT Dental College



KMCT
DENTAL COLLEGE
Recognized Research Centre of KUHS

KMCT MEDICAL COLLEGE CAMPUS
MUKKAM, KOZHIKODE
☎ 0495 229 2002,2003
✉ dental@kmct.edu.in
🌐 www.kmctdentalcollege.org



Staff Mentor Training Program

📅 15th March 2022 ⌚ 10 : 00 AM 📍 Dental College Lecture Hall 2



RESOURCE PERSON

Adv. Dinesh Warriar

Criminal Lawyer
Professional Corporate Trainer

Organized by IQAC, KMCT Dental College



KMCT
DENTAL COLLEGE
Recognized Research Centre of KUHS

KMCT Medical College Campus
Mukkam, Kozhikode 673602
🌐 www.kmctdentalcollege.org



KMCT
DENTAL COLLEGE
Recognized Research Centre of KUHS

Webinar

Topic: Drug Abuse & Social Media Addiction

 **23rd December 2021**  **7.00 PM**



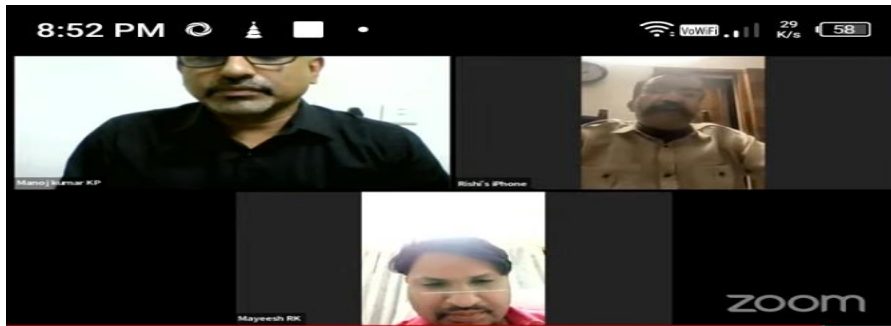
Guest Speaker



Mr. Rishiraj Singh IPS
Former DGP of Police

Organized by the SSGP- KMCT Dental College

KMCT Medical College Campus, Mulkam, Kozhikode 673602



DRUG ABUSE & SOCIAL MEDIA ADDICTION WEBINAR || Mr.RISHIRAJ SI...

64 views · Streamed 3 days ago

- 
 13
- 
 Dislike
- 
 Share
- 
 Download
- 
 Save

KMCT DENTAL CO... SUBSCRIBED
 212 subscribers

Comments

M Add a public comment...



Zoom Session on “Success Mantra” by eminent Clinical Psychologist Dr.Sandheesh on 29 May 2021 for first year exam going students

Workshop on
BEAT the
EXAM **STRESS**

For 1st Year
BDS Regular Batch



13 | JULY | 2022
10.30 am - 1.00 pm
Venue: Lecture Hall 4

Resource Person

Ms. Asha Gopalakrishnan

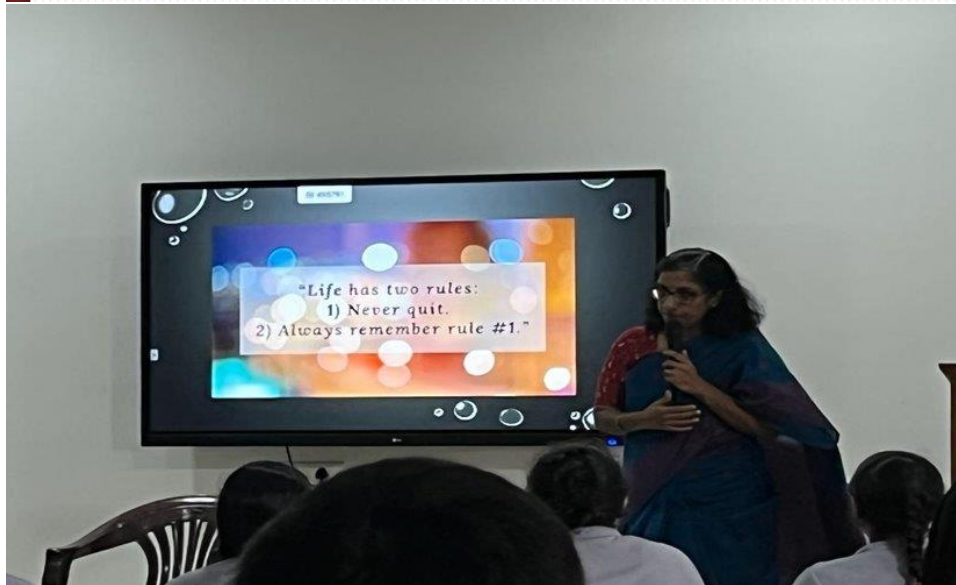
Counselling Psychologist, Educator
Trainer, Happiness & Life Coach



KMCT
DENTAL COLLEGE
Recognized Research Centre of KUHS

KMCT Medical College Campus
Mukkam, Kozhikode 673602

Workshop on 13-7-22



Session for first BDS students by our Counsellor Asha Gopalakrishnan



Cases Reported

YEAR	CASES	COMMENTS
» 2017	1	Resolved by SSGP
» 2018	1	Resolved by SSGP
» 2019	1	Resolved by SSGP
» 2021	3	Ref to psychologist



Status Snapshot

Category	Status
Number of Nodal faculty trained	2
Number of drop outs in nodal faculty	NIL
Total intake of 1 st year students in current year	100
Number of sensitisations conducted for students	1
Number of sensitisations conducted to teachers	1
Number of sensitisations conducted to parents	1
Number of advocacy programs conducted	1
Number of college level reviews conducted	1
Monthly reports to KUHS till last months submitted or not	No

Intervention related Status

Intervention related indices	Status	Comments
Total self reported cases	1	Referred to psychologist
Total referred cases	1	
Total interventions (1 st session)	nil	
Total interventions (Follow ups)	nil	
Total scholastic tools completed	nil	
Total out referrals made	nil	

Critical remarks related to interventions during reporting period

Whastapp Group SSGP

